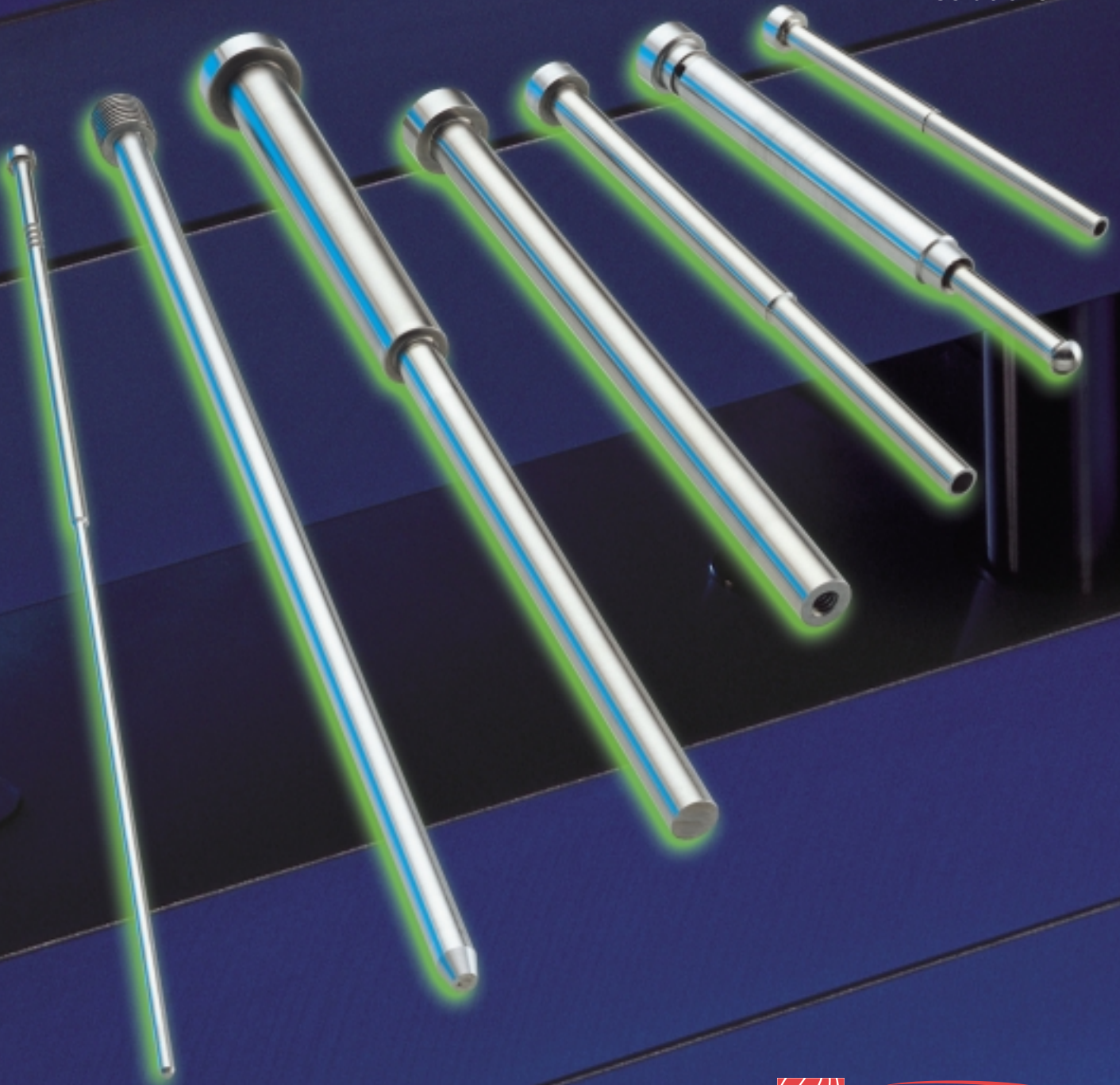


D-M-E SPECIAL PINS AND SLEEVES

Rapid delivery,
cost-effective
solutions





Pins and sleeves — for special applications



Complex part geometries, thinwall molding, family molds, high cavitation molds, increasingly large parts. Every day, challenging new applications and materials are forcing moldmakers to develop creative new tooling solutions. D-M-E is here to help, with comprehensive capabilities for manufacturing special pins and sleeves — quickly and cost-effectively. We offer a wide range of custom features, including:

- Custom diameters (up to 3") and lengths (up to 72")
- Steps
- Profiles
- Custom shoulders
- O-ring grooves
- Non-standard core hardness
- Flats
- Threaded I.D. or O.D.
- Non-standard materials (non H-13)
- Surface coatings — more than 100 available, including titanium nitriding, chromium, etc.
- And many other options

Quick Custom pins

Our new Quick Custom pins program covers a wide range of custom pin configurations with standard heads in any pin diameter. The D-M-E Quick Custom program includes over 7,500 options (the most common custom pins) and features *immediate pricing and shipment in 5 working days or less*. New applications are being added daily, so please contact D-M-E directly to learn more about the offerings in the Quick Custom program.

Full Custom pins and sleeves

If your needs are more complex, or if you need special sleeves, contact D-M-E for a Full Custom quote. Even when you select a Full Custom pin or sleeve, you still get the industry's *fastest pricing and delivery* at a competitive price.

Industry-leading delivery lead times

You can count on D-M-E delivery for your special pin and sleeve needs. Quick Custom pins *ship in 5 working days or less*. For Full Custom pins and sleeves, your D-M-E representative can provide you with a precise completion date for your project — a date D-M-E guarantees.

In-house expertise

D-M-E operates a dedicated state-of-the-art manufacturing facility to ensure your quality and delivery goals are met. Extensive resources and efficient processes guarantee rapid order fulfillment. Advanced manufacturing techniques and trained dedicated personnel ensure quality.

Quality you can count on

D-M-E starts with only the best materials for its pins and sleeves. Our proprietary hot forging technology and in-house nitriding guarantees the finest finished components. The industry's finest surface finish provides low-friction performance for long service life.

Need innovation? Choose D-M-E.

For over 55 years, moldmakers, molders and designers have trusted D-M-E for innovative, reliable solutions to their needs. Nobody beats D-M-E for quality products, quality service and quick delivery. D-M-E delivers your special pin and sleeve needs.



D-M-E Quick Custom Pins

Cover a wide range of applications with shipment in 5 working days or less

D-M-E's Quick Custom series of pins meet the needs of many common special pin applications — with the shortest lead time in the industry. The Quick Custom pins program covers an extensive collection of our most frequently requested special pins. To see if your application is offered in the D-M-E Quick Custom pin program, just check the list below. Then contact D-M-E and we can quote your application and take your order immediately.

Straight pins

- M dimensions from 2" to 14" (overall length)
- G dimensions from .0320" to 1" (pin diameter)
- All standard H dimensions (head diameter)
- All standard K dimensions (head thickness)
- H-13 material
 - Standard D-M-E C pin material
 - Standard D-M-E CX pin material
 - Standard D-M-E EX pin material
 - Standard D-M-E THX pin material

Step pins

- G dimension of .125" (shoulder diameter)
- All standard H dimensions (head diameter)
- All standard K dimensions (head thickness)
- L dimensions — standard 1/2" or 2", or customer specified shoulder length
- M dimensions from 2" to 14" (overall length)
- D dimensions from .0320" to .1094" (pin diameter)
- H-13 material
 - Standard D-M-E C pin material
 - Standard D-M-E CX pin material
 - Standard D-M-E EX pin material
 - Standard D-M-E THX pin material



Faxable Quote Form — Quick Custom Pins

Quick Custom Pins

(Custom diameter and length with standard head)

Tolerances

- L: +0/ -0.012
- G: +0 / -0.0005
- M: .375 / -0
- H: +0 / -0.010
- K: +0 / -0.002
- R: 1/32" max.

Choose a pin type:

- EX (35Rc - 43Rc core hardness with 65Rc - 70Rc case hardness)
- THX (50Rc - 55Rc core hardness with 65Rc - 70Rc case hardness)
- CX (50Rc - 55Rc through hard)
- C (30Rc - 35Rc through hard)

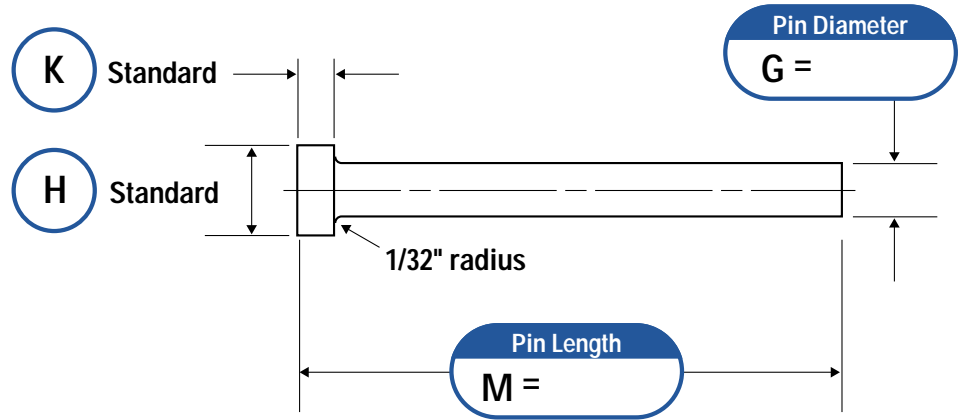
Quantity: _____ Pieces

Shipping instructions:

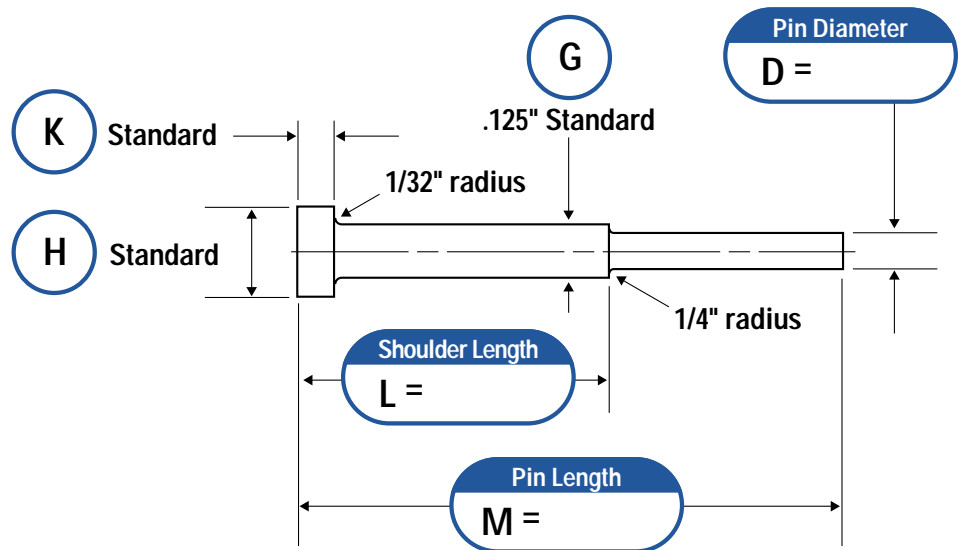
- UPS Ground
- UPS 2nd Day Air
- UPS Next Day
- FedEx
- Other

Quote Hotline FAX: 888-808-4363 or www.dmeco.com

Straight Pin



Step Pin



Custom Made Pins Shipped in 5 Days or Less!

Company name: _____ D-M-E account #: _____

Contact name: _____

Phone: _____ FAX: _____

Email: _____

D-M-E Full Custom Pins

No application is too complex for D-M-E

With a Full Custom pin or sleeve, the sky's the limit for features and dimensions. No matter how complex, we'll quote your application within 24 hours.

Heads

Most diameters
Most thicknesses
Threaded heads
Form grinding



Diameters

From .025" to 3.00"
Steps
Profiles



Lengths

Up to 72"



Special Features

Flats
O-ring grooves
Threaded I.D. or O.D.



Materials

EX, C, CX or THX hardnesses
Materials including:

- Most tool steels
- Stainless steel
- Copper alloys



Special surface coatings

- Titanium nitriding
- Ion nitriding
- Armor clad
- Chromium
- Black oxide

Faxable Quote Form — Full Custom Pins and Sleeves

Full Custom Pins

Quantity: _____
 Material H-13
 Other _____
 Hardness _____ Rc
 Nitrided Yes No
 Comments _____

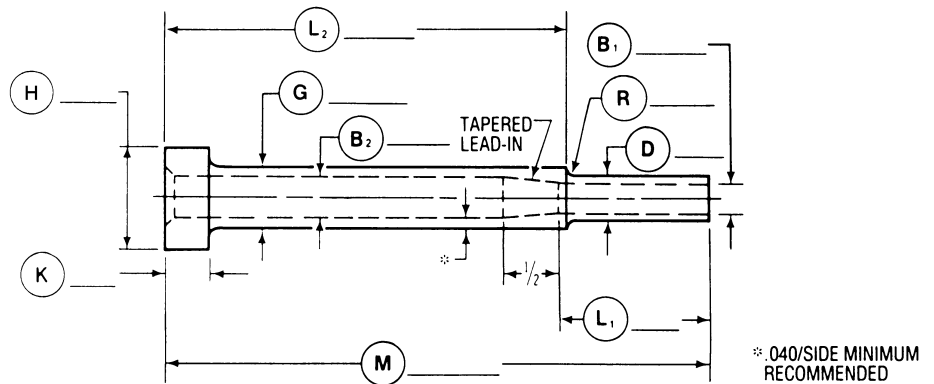
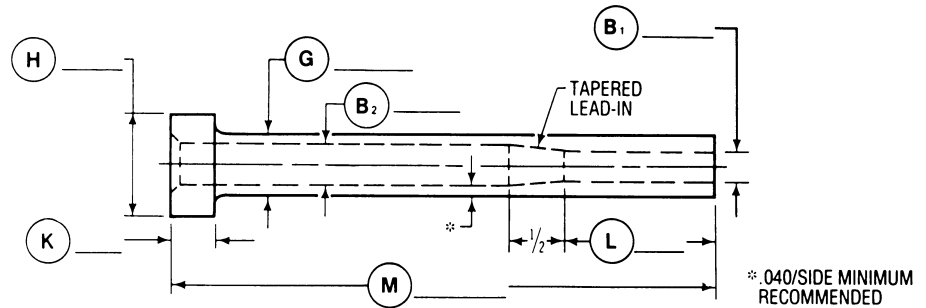
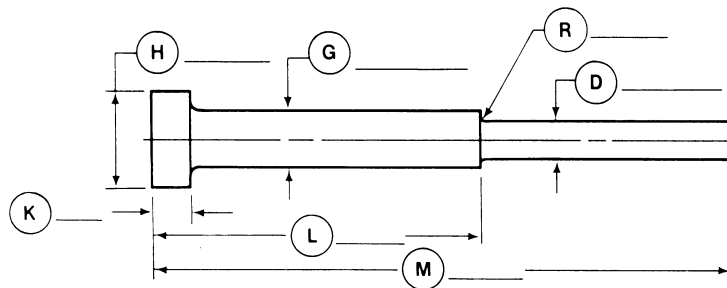
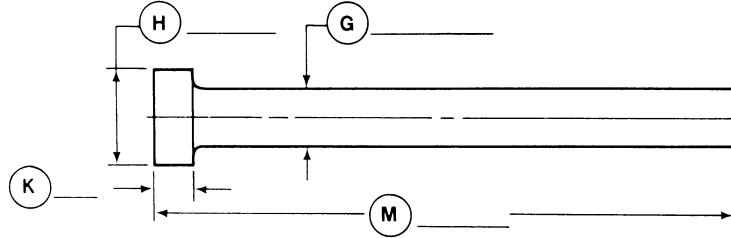
Full Custom Sleeves

Quantity: _____
 Material H-13
 Other _____
 Hardness _____ Rc
 Nitrided Yes No
 Comments _____

Shipping instructions:

- UPS Ground
- UPS 2nd Day Air
- UPS Next Day
- FedEx
- Other

Quote Hotline FAX: 888-808-4363 or www.dmeco.com



Quote Hotline FAX: 888-808-4363 or www.dmeco.com

Company name: _____ D-M-E account #: _____
 Contact name: _____
 Phone: _____ FAX: _____
 Email: _____

Serving customers in over 70 countries worldwide. D-M-E is the leader for injection molding solutions and support. D-M-E has manufacturing and distribution locations in North America, South America, Europe and Asia.



World Headquarters

D-M-E Company

29111 Stephenson Highway
Madison Heights, MI 48071
Toll Free 800-626-6653
Tel 248-398-6000
Fax 888-808-4363
E-mail dmeinfo@dmeco.com
Website www.dmeco.com

D-M-E of Canada, Ltd.

6210 Northwest Drive
Mississauga, Ontario, Canada L4V 1J6
Toll Free 800-387-6600
Tel 905-677-6370
Fax 905-677-5280